

MARY TAYLOR MEMORIAL UNITED METHODIST CHURCH
168 South Broad Street Phone: 203.874.1982
Milford, Connecticut 06460 FAX: 203.877.8973

Order of Worship
10:00 a.m.

(* Those who are able may stand. °°° Late arrivals will be seated.)

THE BELL TOLLS – *Welcoming us to worship God*

PRELUDE “A Song of Adoration” V. Thompson

ANNOUNCEMENTS AND MINISTRY OPPORTUNITIES
(*Please keep our focus on the worship of God by sharing items not published elsewhere.*)

INTROIT “I Sing Praises to Your Name”

*CALL TO WORSHIP from Psalm 29

Leader: Give to the Lord the glory due his name!

People: *God’s voice is strong, the Lord’s voice is majestic.*

All: *Let the Lord give strength to his people!
Let the Lord bless his people with peace!*

*HYMN #139 “Praise to the Lord, the Almighty” Lobe den herren

PRAYER OF THE DAY (*seated, unison*) “Baptism of the Lord” Hymnal #253, adapted
Father in heaven, at the baptism of Jesus in the River Jordan you proclaimed him your beloved Son and anointed him with the Holy Spirit. Grant that we who are baptized in his name may pursue our call through mountain peaks and valleys, and boldly claim him as Lord and Savior, who with you and the Holy Spirit lives and reigns, One God, in glory everlasting. Amen.

UNISON PRAYER OF CONFESSION

O welcoming God, you spread your arms wide in welcome. We are grateful you receive us in mercy, forgiveness and blessing. Keep us, then, from cowering hearts and shriveled spirits that cause us to fall away from your path. Forgive us those times that we build barriers instead of removing them or allow despair or challenges to divert us from your vision. Help us be the leaders you want us to be in the world. Amen.

SILENT CONFESSION AND WORDS OF PARDON

°°°
THE PSALTER Psalm 121:1-8 Hymnal p.560
Reader: The Word of the Lord. People: *Thanks be to God.*

ESPECIALLY FOR THE CHILDREN

*HYMN #252 “When Jesus Came to Jordan” Complainer

*THE GOSPEL Luke 3:15-17, 21-22 Bible p.935

Reader: The Gospel of the Lord. People: *Praise to you, Lord Christ.*

THE SERMON “Peak Perspective” Bonnie Marden

*HYMN #251 “Go, Tell It on the Mountain” African-American Spiritual

INSTALLATION OF 2016 MARY TAYLOR MEMORIAL OFFICERS AND LEADERS

Today we install our 2016 church officers and leaders. Do you this day acknowledge yourself a faithful disciple of Jesus Christ? **I do.**

Will you devote yourself to the service of God in the world? **I will.**

Will you so live that you enable this church to be a people of love and peace? **I will.**

Prayer of the people: *Almighty God, pour out your blessings upon these servants who have been given particular ministries in your church. Grant them grace to give themselves wholeheartedly in your service. Keep before them the example of our Lord, who did not think first of himself, but gave himself for us all. Let them share his ministry and consecration that they may enter into his joy. Guide them in their work. Reward their faithfulness with the knowledge that, through them, your purposes are accomplished; through Jesus Christ our Lord. Amen.*

HYMN #2172 (*seated*) “We Are Called” rear cover

PRAYERS OF PETITION AND INTERCESSION

Leader: Lord, in Your mercy, People: *Hear our prayer.*

THE LORD’S PRAYER Hymnal #895

*THE PEACE

L: May the peace of the Lord be always with you. P: *And also with you.*
(*Greet one another with signs of Christ’s peace.*)

PRESENTATION OF TITHES AND OFFERINGS

Offertory Anthem: “Praise the Lord, our God, Forever” arr. by W. Ehret

*Presentation: “Praise God from Whom all Blessings Flow” Hymnal #94

*Prayer of Dedication

*HYMN #77 “How Great Thou Art” How Great Thou Art

*THE BENEDICTION

*THE BENEDICTION RESPONSE Hymnal #666
*“Shalom to you now, shalom, my friends. May God’s full mercies bless you, my friends.
In all your living and through your loving, Christ be your shalom.”*

*THE BELL TOLLS – *Sending us to walk with and witness for Jesus*

(During the postlude you may leave following the pastor or remain seated.)

THE WORSHIP IS ENDED: THE SERVICE BEGINS.

SOCIAL HOLINESS

We Are Called

2172



1. Come! Live in the light! Shine with the
2. Come! O - pen your heart! Show your
3. Sing! Sing a new song! Sing of that



joy and the love of the Lord! We are called to be
mer - cy to all those in fear! We are called to be
great day when all will be one! God will reign, and we'll

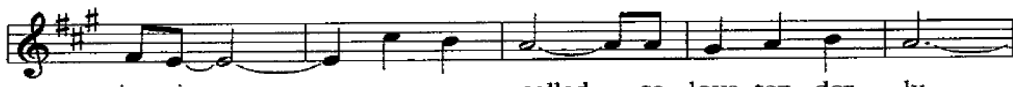


light for the king-dom, to live in the free-dom of the
hope for the hope-less so all ha-tred and blind-ness will
walk with each oth - er as sis-ters and broth-ers u -



Refrain

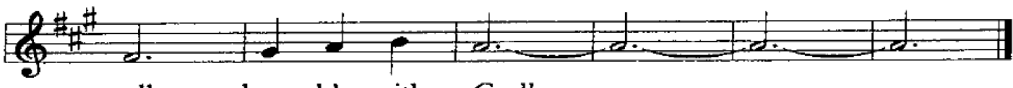
cit-y of God! We are called to act with
be no more! in love!
nit-ed in love!



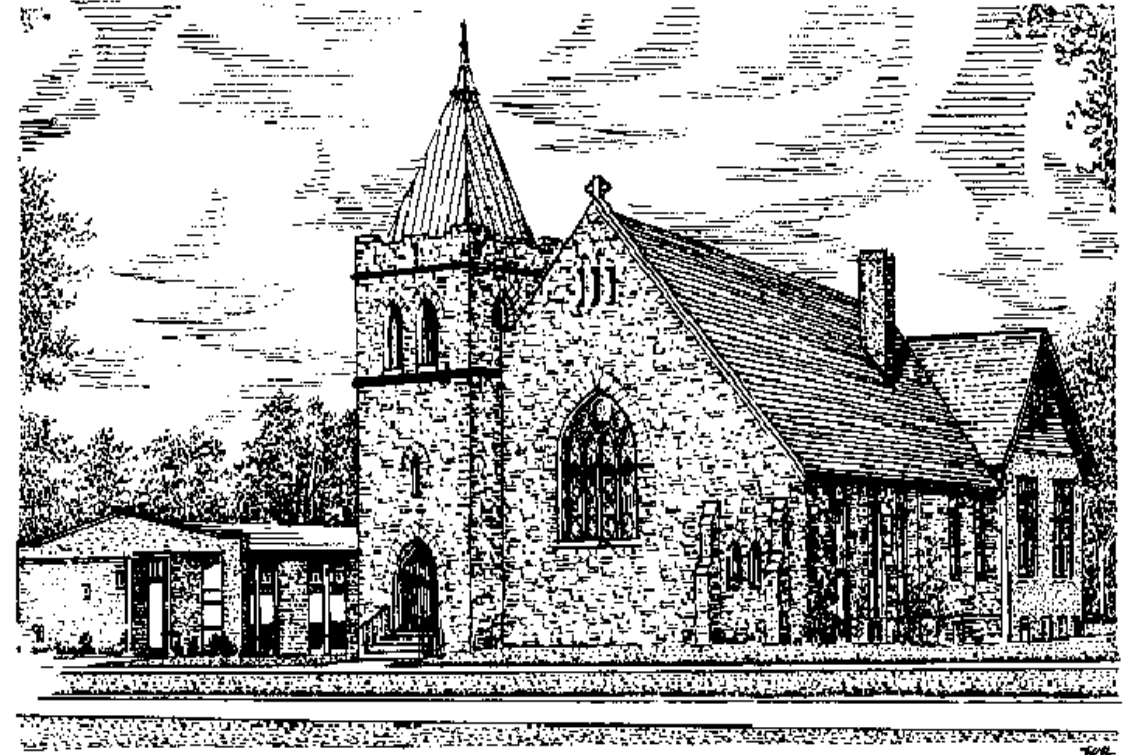
jus-tice, we are called to love ten-der - ly,



we are called to serve one an - oth - er, to



walk hum-bly with God!



Mary Taylor Memorial United Methodist Church

First Methodist Church in Milford: 1836

Current building dedicated: 1893

Merged with Myrtle Beach Community Church: 1969

Whoever you are, wherever you are
on your spiritual journey, you are welcome here.

THE BAPTISM OF THE LORD

January 10, 2016

~Two week calendar at Mary Taylor Memorial~

Sunday, January 10

THE BAPTISM OF THE LORD

9:00 a.m. Sunday School - Worship in Chapel
10:00 a.m. Worship - Sanctuary
11:00 a.m. Fellowship Time – Dodd Hall
11:00 a.m. United Methodist Women Second Sunday Soup Sale
11:30 a.m. “Come Mountain Climbing” Leadership Seminar and
Light lunch – Dodd Hall

Monday, January 11

4 – 6 p.m. Methodist Youth Fellowship – Youth Lounge
6:00 p.m. Membership and Evangelism Committee – Gunn Library
7:00 p.m. Service of Healing and Wholeness – Chapel

Tuesday, January 12

5:45 p.m. Confirmation Class – Egan Room, Wesley Center
7:00 p.m. Adult Bible Study – Pastor Hal - Gunn Library – Wesley Center

Wednesday, January 13

10:00 a.m. Adult Bible Study – Pastor Hal - Gunn Library – Wesley Center
5:30 p.m. Praisemakers Choir rehearsal – Dodd Hall
6:30 p.m. Bell Choir/7:45 p.m. Adult Choir rehearsals – Dodd Hall

Thursday, January 14

7:00 p.m. Staff-Parish Relations Committee – Gunn Library
7:00 p.m. Prayer Shawl Ministry – Wesley Center, 1st Floor

Friday, January 15

10:00 a.m. Office Volunteers – Gunn Library – Wesley Center
8:00 a.m. Volunteer Work Day – church (Volunteer to 203.641.5088)

Saturday, January 16

THE SECOND SUNDAY AFTER THE EPIPHANY

9:00 a.m. Sunday School - Worship in Chapel
9:45 a.m. Informal hymn singing - Sanctuary
10:00 a.m. Worship - Sanctuary
11:00 a.m. Fellowship Time – Dodd Hall
11:15 a.m. Blood Pressure Screenings – Sanctuary
11:15 a.m. Fair On The Green Kick-off meeting – Wesley Center 1st floor

Monday, January 18

Church Office is closed in observance of Rev. Dr. Martin Luther King, Jr. Day
6:00 p.m. Historical Society meeting – Dodd Hall – Marcia Winter
7:00 p.m. Service of Healing and Wholeness – Chapel

Tuesday, January 19

5:45 p.m. Confirmation Class – Egan Room, Wesley Center
7:00 p.m. Adult Bible Study – Pastor Hal - Gunn Library – Wesley Center
10:00 a.m. Adult Bible Study – Pastor Hal - Gunn Library – Wesley Center

Wednesday, January 20

12:00 p.m. Taize Worship – Sanctuary
5:30 p.m. Praisemakers Choir rehearsal – Dodd Hall
6:30 p.m. Bell Choir/7:45 p.m. Adult Choir rehearsals – Dodd Hall

Thursday, January 21

7:00 p.m. MTMUMC Foundation – Gunn Library
7:00 p.m. Church Council meeting – Dodd Hall Alcove
8:30 p.m. Taize Worship – Sanctuary

Friday, January 22

10:00 a.m. Office Volunteers – Gunn Library

MARY TAYLOR MEMORIAL UNITED METHODIST CHURCH

Telephone: 203.874.1982

Fax: 203.877.8973

Website: www.mtm-umc.org

www.facebook.com/MTMUMC

E-mail:

mtmumc@sbcglobal.net

Ministers

All the People of God

Bishop

The Rev. Jane Allen Middleton

Lay Leaders

Kelly O’Hara & Leigh Bak

Superintendent

The Rev. Kenneth Kieffer

Prayer Chain

Stacy Meszaros

Pastor

The Rev. Dr. Brian R. Bodt

Administrative Assistant

Mary Lou Kampert

Pastoral Assistant

The Rev. Harold V.W. Vink

Sexton

Bruce Rumford

Outreach Pastor

Rachel Duncan

Child Care Coordinator

Nicole Ellerbeck

Music Director

Dr. Richard L. Riccardi

Grace Notes

January 10, 2016

Dear Mary Taylor Memorial Church community,

Today we welcome Bonnie I. Marden, our guest preacher and leader of our “Come Mountain Climbing with Us!” event. Called to the ministry of reconciliation and empowerment, Bonnie coaches congregations to discern and implement life-giving ministry plans and decisions with grace and integrity.

Training and facilitation for congregational leadership integrates a recognition of diversity of style, communication and history which strengthens vision, stewardship practices and vitality. We are happy to have Bonnie share her gifts in these areas with us today.

Bonnie also chairs the Northeastern Jurisdiction Committee on Episcopacy and is serving as a New England Conference delegate to General and Jurisdictional Conference. Please greet her and join us if you can after worship for a light lunch and “mountain climbing.”

Sincerely yours in Christ,

Pastor Brian Bodt

A NOTE FROM YOUR STAFF: *“We are deeply grateful for your generous Christmas love gift made possible by the generosity of so many MTMUMC members and friends. Thank you so much and God bless you all in the New Year.*

Warmly, Pastors Brian, Hal and Rachel; Rick, Bruce, Mary Lou and Nicole.

AT WORSHIP TODAY

Head Usher – Dennis Darak

Liturgist – Christine McGregor

Acolytes – Stefano Cono and Lucas Greiszu

Greeters – Judy Russell and Diana Titus

Cross Bearer – Ryan Lapadula

Bible Bearer – Carolyn Hollyday

GREETING YOU AFTER WORSHIP are Rev. Bodt and Christine McGregor.

ALTAR FLOWERS today are in honor of Sheryl's birthday, given by Tom and Carolyn Hollyday.

A **MISSION CROSS** has been placed and a donation has been made to UMARMY in honor of Dennis Russell for his birthday today, given by his grandmother, Judy Russell.

TO ASSIST YOU IN WORSHIP, see our ushers for:

- Large print Bibles, hymnals and bulletins
- Hearing Assist Devices
- Children's bulletins for ages 3 – 6 and 7 – 12

CHILD CARE for children 5 and under is provided in Wesley Center, the building next door. You may also hear the service in Dodd hall should your child become restless. Please note that children over five are expected to remain in the sanctuary; the child care in Wesley Center is not staffed to provide for older children. Our Safe Sanctuary policy requires that children leaving the sanctuary must be accompanied by an adult or guardian.

PLEASE OFFER PRAYER CONCERNS using the "Blue Sheets" in the attendance pads in each pew; or obtain one from an usher. Ushers collect them on the opening hymn and our Lay Leaders speak them during the Prayer of Intercession and Petition. Please obtain others' permission to share their concerns. Prayers are included in our on-line prayer chain and Monday night Healing Service. You are also invited to speak your concerns when we pray.

TODAY'S LITURGY is taken from Holy Scripture, The United Methodist Hymnal (1989) and The United Methodist Book of Worship (1992) and The Faith We Sing (2000).

WELCOME VISITORS! May you experience God's presence today. Please complete a red visitor's card (in the pew racks) and wear the "Visitor" name tag to help us greet you. Our Ambassadors will look for you! **CHURCH INFORMATION** is in the rear of the church.

SERMON COPIES from previous Sundays are in the rear of the church or at www.mtm-umc.org.

TO DONATE ALTAR FLOWERS OR A MISSION CROSS, contact Beth O'Brien at 203.877.8668 or bgobrien11@optonline.net. Flowers are \$20. A donation in lieu of flowers to support missions is honored with a cross and miniature mission scarf on the altar. Checks for either are payable to MTMUMC and mailed to Beth O'Brien, 7 Breakneck Court, 06460.

FAIR ON THE GREEN MEETING

Sunday January 17, 2016

Immediately following worship, in Wesley Center

Kick-off Meeting for the New Year!

We will be:

Stuffing envelopes for our vendors

Discussing old and new business

Presently, we need help in 4 areas:

Publicity

Must be computer savvy

Visit craft fairs and meet with crafters

Grill coordinator

Enforce health rules and regulations

Coordinate staffing, scheduling, and supplies

Insure that equipment is in running order

Volunteer Coordinator

Coordinate volunteers to ensure all sign-in

Meet staffing needs

Help with vendors during sign-in

Theme Basket Coordinator

Publicize and collect baskets

Wrap and label baskets

Manage theme basket table on Fair days

Any interested volunteers please contact:

Edie Reichard 203-650-5733

Christine Volgmuth 203-710-9835

Bob Virgalla 203-733-5006

Becky Virgalla 203-788-2889

MARY TAYLOR MEMORIAL CHURCH
2016 OFFICERS AND LEADERS

Church Council Chair	Shelly Lapadula
#Pastor	Rev. Dr. Brian R. Bodt
Secretary	Joanne Platt
Co-Lay Leaders	Kelly O'Hara and Leigh Bak
Lay Members of Annual Conference	Kelly O'Hara and Rachel Merva
Alternate Lay Member of Annual Conference	Eileen Doyle
*President, Board of Trustees	Rachel Merva
Chairperson, Finance	Nancy Bennett
Chairperson, Staff-Parish Relations	Dennis Darak
#Chairperson, Nominations and Leadership	Rev. Dr. Brian R. Bodt
*President, MTMUMC Foundation	Sue O'Shea (new election 1/28/16)
Treasurer	Eileen Doyle
Assistant Treasurers	Christine Volgmuth, Steve Wasko
Ministry Team Chairpersons	
Worship	Priscilla James
Missions	Maryann Petremont
Stewardship	David and Eileen Doyle
Membership and Evangelism	Sandy Morgan and Holly Firmender
Sunday School Superintendent	Cathy Cono
Assistant Sunday School Supt.	Holly Firmender
Technology Committee	Bob Lawrence
+Fair on the Green Head of Operations	Christine Volgmuth and Edie Reichard
+Assistant FOTG Head of Operations	Bob and Becky Virgalla
+Camping	_____ (NY Conference Camps)
	Stacy Meszaros (UM Army)
+Communications	Kat Bennette, Kelly O'Hara
+Gay-Straight Alliance Co-Chairs	Eileen Doyle and _____
+Parish Nurse Team	Eileen Potkay
+Caring Ministries Team	Don Hastings, #Pastor Hal Vink
*United Methodist Women	Joan Zauner
*Men's Club	Jim Repetsky
+U. M. Youth Fellowship Advisors	Dawn Bettencourt, Paul Downing, Shelly Lapadula, Rachel Merva, Alicia Meszaros, Catherine Meszaros, Stacy Meszaros, Dawn Fino, #Pastor Rachel Duncan
	Wil Wright

*Elected by respective organization

+Appointment/volunteer confirmed by Nominations and Leadership

Ex officio

ACTIVITIES AND INFORMATION TODAY

FELLOWSHIP TIME follows worship in Dodd Hall (behind the sanctuary) hosted today by the Gay Straight Alliance and next Sunday by the Methodist Youth Fellowship.

SECOND SUNDAY SOUP SALE by our United Methodist Women is held during Fellowship Time today with proceeds supporting their mission work.

LEADERSHIP TRAINING AND SPIRITUAL FORMATION on the theme "*Come Mountain Climbing with Us!*" is **today** with complimentary lunch beginning at 11:30 a.m. and program concluding by 2 p.m. Join us in Dodd Hall as we peak our readiness for God's call!

METHODIST YOUTH FELLOWSHIP meets **today, 4 – 6 p.m.** in the Youth Lounge. **High School students** going to attend the MYF trip **next Sunday, January 17th** to the Dr. King seminar at the Peabody Museum in New Haven, RSVP today to Pastor Rachel at 203.874.1982, rachel.e.duncan@gmail.com or Stacy Meszaros at 203.414.9235, stacymesz@gmail.com.

THE ADULT STUDY WITH PASTOR HAL began this week. This is a "last call" to join in this study on the books of Jeremiah and Lamentations **either** Tuesday evenings from 7-8:30 p.m. or Wednesday mornings from 10-11:30 a.m. in the Gunn Library, Wesley Center, 2nd Floor. The study concludes Jan. 26/27. **Speak with Pastor Hal today if interested.**

2016 OFFERING ENVELOPES are available for pick up in the rear of the sanctuary.

SEE THE WEEKLY CALENDAR FOR MEETING LOCATIONS AND SCHEDULE.

THIS WEEK

FEBRUARY "BEACON" DEADLINE is **this Friday, January 15**, articles submitted on or before this date to mtmumc@sbcglobal.net or hard copy to the church office.

WINTER WORK DAY will be **this Saturday, January 16th, 8 a.m. - Noon** on the church campus. Our Trustees plan light cleaning, organizing and decluttering. Please bring window / furniture cleaner, dust rags, dust pan/broom, sponges and buckets if you can. Cleaning supplies will also be available on site. When you arrive, please come to Dodd Hall to check in and you will be assigned to a work area. Water and snacks will be provided. Thank you for your support! Contact Rachel Merva for more information (rmerva@optonline.net or 203-641-5088).

SCHEDULE CORRECTION AND CHANGE

CORRECTION TO THE "BEACON" CALENDAR: The next United Methodist Women meeting is a pot-luck on **Monday, Jan. 25 at 5:30 p.m.** There is NO meeting on January 12th.

THE MTMUMC FOUNDATION MEETING previously scheduled for January 28th has been moved to **Wednesday, Jan. 20 at 7:00 p.m.** in the Gunn Library.

NEXT SUNDAY

HUMAN RELATIONS DAY - Informal hymn singing precedes worship at 9:45 a.m. The message "Two People Divided by a Common Language" will be based on I Corinthians 12:1-11 and John 2:1-11. We will receive the denominational offering for Human Relations Day. Blood pressure screenings will follow worship.

"FAIR ON THE GREEN" MEETING will be next Sunday, Jan. 17 immediately following worship in the Wesley Center. **ALL ARE INVITED** to this kick-off meeting for our only all-congregation fund-raising event. See the flier in this issue. The Fair is Friday, June 3rd and Saturday, June 4th, 2016. This is a great way to get to know your church community better!

PLEASE SAVE THESE DATES

SUNDAY, JANUARY 31:

Connecticut District Resourcing Days, 2 – 4:45 p.m., Westport UMC, 49 Weston Road, Westport. Details on the enclosed flier.

SATURDAY, FEBRUARY 6:

Connecticut District United Methodist Women Winter gathering, 8:30 a.m. Registration, 9:30 a.m. – 2:30 p.m. program, First United Methodist Church of Shelton, 188 Rocky Rest Road, Shelton. Cost: \$8.50. Registration form on the enclosed flier.

Connecticut District Resourcing Days, 9 – 11:45 a.m., Woodbury UMC, 4 Church Street, Woodbury. Details on the enclosed flier.

BETH-EL SHELTER COLLECTION

January is our month to support the Beth-El Shelter with paper goods, kitchen and other supplies. Our ongoing commitment supports the shelter work in the City of Milford to provide a safe and warm shelter for those less fortunate. Please help to provide these items:

Kitchen and Paper Supplies: Paper towels, hot/cold cups (6oz or 8oz), 8oz bowls, tall kitchen garbage bags (13 gal), paper placemats, paper napkins, food storage bags (gallon, sandwich and snack sizes), plastic wrap, heavy duty aluminum foil, toilet paper, facial tissue and large heavy duty garbage bags (55 gallon).

Cleaning Supplies: Anti-bacterial household cleaners such as; Lysol/Pine-Sol & bleach (gallon), kitchen wipes, glass cleaner, dish detergent, dishwasher detergent, scouring pads and sponges.

Other items: Hand soap, feminine hygiene products, band aids, gauze, medical tape, Vinyl powder-free gloves (s, m, l, no latex) and hand sanitizer. **There is a collection box in Dodd Hall for the month of January.**

OUR LIFE IN PRAYER, MINISTRY AND MISSION

BULLETIN NOTICES are due by noon Wednesday for the following Sunday bulletin.

FOOD BASKET: Please place non-perishable food items in the basket located in the back of the church and monetary donations in the Beth-El envelope.

ANIMAL SHELTER DONATIONS: "Wet and dry cat food is needed for seniors with pets. Also wet and dry dog food for the canine facility. Towels and blankets **are** needed. Animal Control will not take peoples' released pets but will spay and neuter feral cats. Please leave your donations in the designated basket in the back of the Sanctuary. The Youth Fellowship brings these items to Animal Control each week. Bless you for caring for God's children with fur."

If you and your animals are in need, please help yourself to the available donations.

CONTACTING THE PASTORS: Please inform a pastor or the church office (203.874.1982, mtmumc@sbcglobal.net) of pastoral care needs and hospitalizations:

Pastor Brian Bodt can be reached at brian.bodt@yahoo.com; 203.874.1982, ext. 11 or 203.895.3753. He is typically in office **10 am – 1 p.m.**, Mon. – Thurs. Appointments scheduled in advance are always the best way to get his full attention.

Pastor Hal Vink can be reached at 203.878.8977 or vinkhaljane@gmail.com.

Pastor Rachel Duncan can be reached at 203.874.1982 or rachel.e.duncan@gmail.com.

"FIX IT BOX" is in Dodd Hall. See a need? Drop a completed form in the box.

WE HOST Alcoholics Anonymous AND Gamblers Anonymous WEEKLY. Please call the church office for the schedule or see it posted on the bulletin boards.

PLEASE NOTE: During a medical or other emergency the Head Usher or a designee will call #911. Please do not call on your cell phone as multiple calls may delay response.

INCLEMENT WEATHER NOTICE: Pastor Brian will consult with leaders as needed and agree on plans for worship, Sunday School, and other activities. **Weather-related closings will be posted on church voice mail, Yahoo e-mail group, and WTNH (Channel 8).**

VITAL CONGREGATION WEEKLY REPORT FOR January 3rd:

Total worship attendance all services: 165; January 3rd: 155; January 4th: 10 Total Offerings (minus "Lift Us Up) for January 3rd: \$4,985.50; "Lift Us Up" Capital Campaign gifts \$625.00; Amount given to Charities and Benevolences: \$0; Engaged in Small Groups: 129 - (Office Volunteers: 2; Men's Club: 15; Sunday School: 36; Bible Study Tues: 8; Wed: 16; Confirmation class: 8; Community Supper, Golden Hill UMC: 14; Praisemaker's: 0; Bell and Adult Choir: 30;). Total persons received on profession of faith: 0; Total Persons involved in local, national, and international missions: 0.) *Small Groups – please contact the church office mtmumc@sbcglobal.net or 203.874.1982) with your attendance.